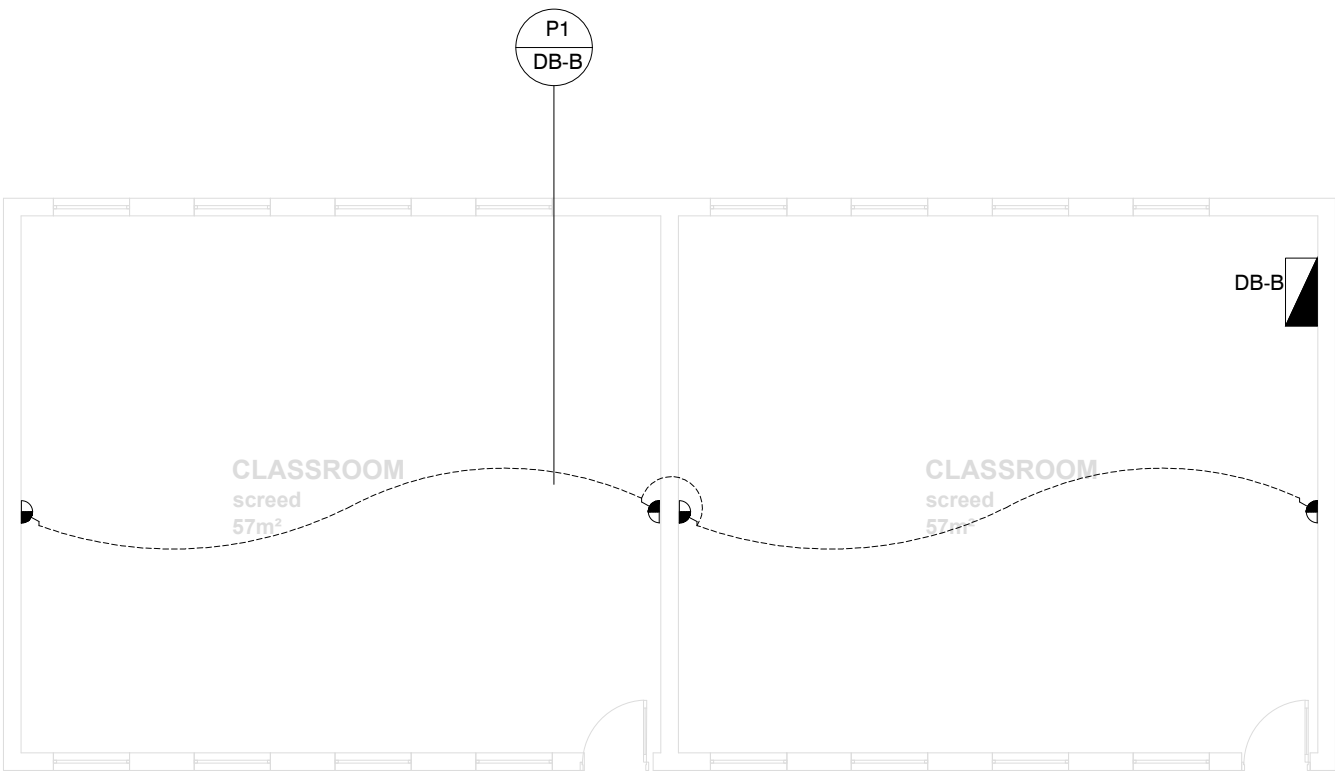
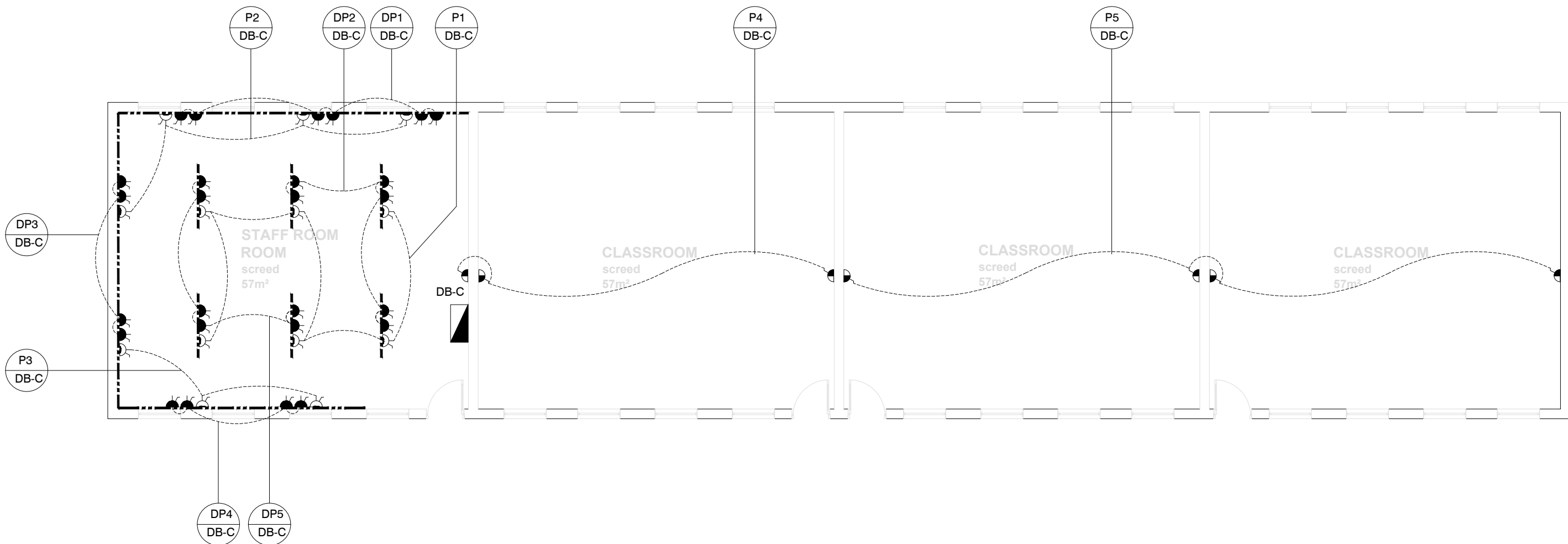


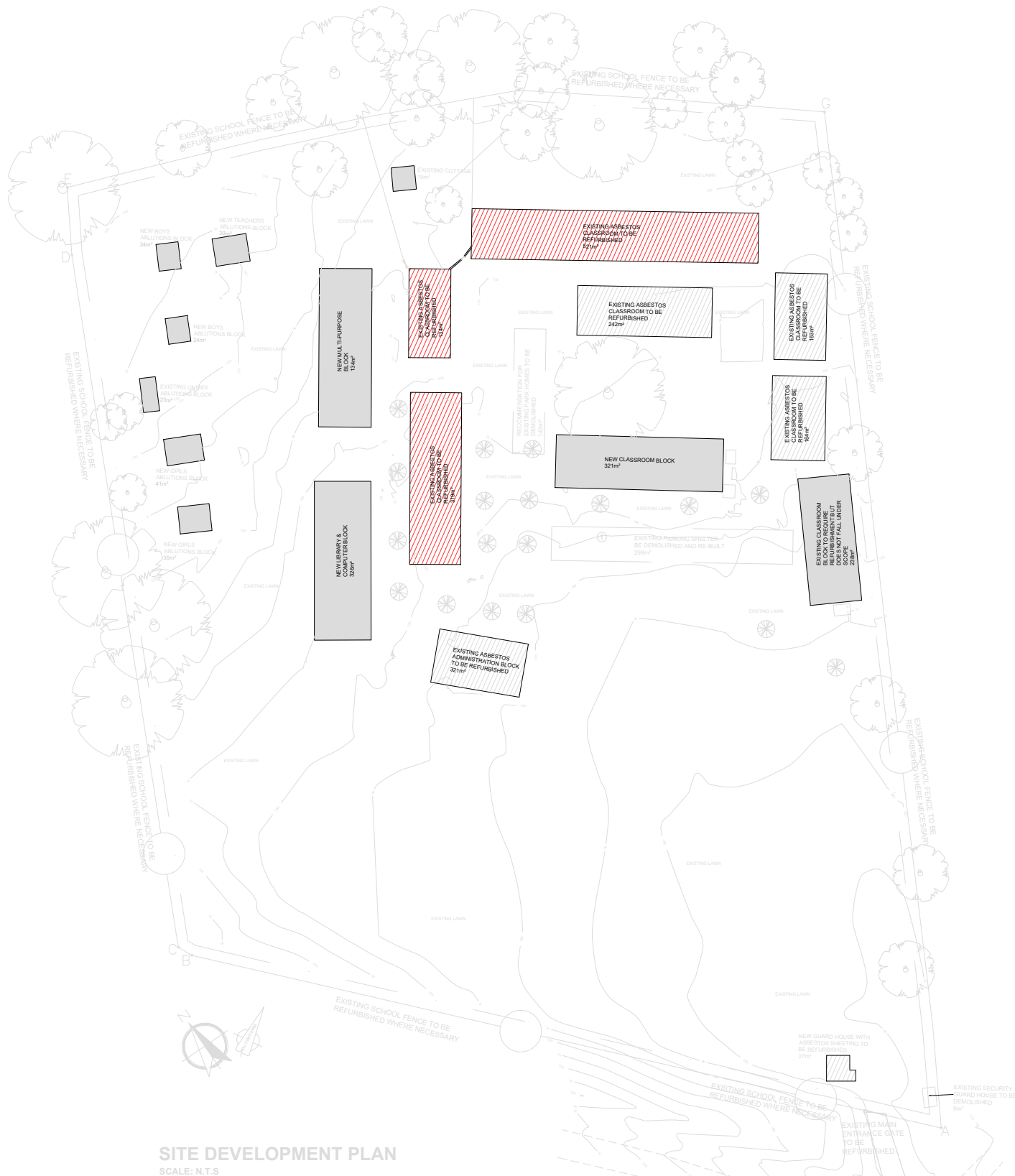
EXISTING CLASSROOMS - CL6
SCALE 1 : 100



EXISTING CLASSROOMS - CL2
SCALE 1 : 100



EXISTING CLASSROOMS - CL4
SCALE 1 : 100



LEGEND:	
	NEW 16amp STANDARD SOCKET 3 PIN SWITCH SOCKET OUTLETS BEARING THE SABS MARK MOUNTED 300mm A.F.F.L ON POWER SKIRTING. 16amp NORMAL BSO's TO BE WIRED WITH 2 x 4.0mm² (L+N) PVC WIRE 2.5mm²/CEW. 20amp SP 5kg CB IN DISTRIBUTION BOARD FOR PROTECTION. 20amp SP 5kg CB IN DISTRIBUTION BOARD FOR PROTECTION.
	NEW 16amp STANDARD SOCKET 3 PIN SWITCH SOCKET OUTLETS BEARING THE SABS MARK MOUNTED 300mm A.F.F.L ON WALL. 16amp NORMAL BSO's TO BE WIRED WITH 2 x 4.0mm² (L+N) PVC WIRE 2.5mm²/CEW. 20amp SP 5kg CB IN DISTRIBUTION BOARD FOR PROTECTION. 2025mm PVC CONDUIT IS TO BE INSTALLED TO ALL POINTS ON 100mm x 100mm STEEL DRAW BOX ON WALL. 20amp SP 5kg CB IN DISTRIBUTION BOARD FOR PROTECTION.
	NEW 16amp STANDARD 3 PIN DOUBLE SWITCH SOCKET OUTLETS BEARING THE SABS MARK MOUNTED ON WALL 300mm A.F.F.L. 16amp NORMAL BSO's TO BE WIRED WITH 2 x 4.0mm² (L+N) PVC WIRE 2.5mm²/CEW ON WALL. 2025mm PVC CONDUIT IS TO BE INSTALLED TO ALL POINTS ON 100mm x 100mm STEEL DRAW BOX ON WALL. 20amp SP 5kg CB IN DISTRIBUTION BOARD FOR PROTECTION.
	NEW 16amp DEDICATED 3 PIN SWITCH SOCKET OUTLETS BEARING THE SABS MARK. ISOLATED EARTH PIN SHAVED AT 90° CHAMFERED EARTH. 1. 16amp 3 PIN SHAVED BSO's TO BE WIRED WITH 2 x 4.0mm² (L+N) PVC WIRE & 2.5mm² PVC GREEN INSULATED EARTH MOUNTED ON A POWER SKIRTING. 2. NO EARTH LEAKAGE FOR THIS CIRCUIT. 3. 20amp SP 5kg CB IN DISTRIBUTION BOARD FOR PROTECTION.
	NEW 16amp DEDICATED 3 PIN SWITCH SOCKET OUTLETS BEARING THE SABS MARK. ISOLATED EARTH PIN SHAVED AT 90° CHAMFERED EARTH. 1. 16amp 3 PIN SHAVED BSO's TO BE WIRED WITH 2 x 4.0mm² (L+N) PVC WIRE & 2.5mm² PVC GREEN INSULATED EARTH MOUNTED ON WALL. 2. NO EARTH LEAKAGE FOR THIS CIRCUIT. 3. 2025mm PVC CONDUIT IS TO BE INSTALLED TO ALL POINTS ON 100mm x 100mm STEEL DRAW BOX ON WALL. 20amp SP 5kg CB IN DISTRIBUTION BOARD FOR PROTECTION.
	NEW 16amp STANDARD SOCKET 3 PIN 1x2 PIN SWITCH SOCKET OUTLETS BEARING THE SABS MARK MOUNTED ON WALL 300mm A.F.F.L. 16amp NORMAL BSO's TO BE WIRED WITH 2 x 4.0mm² (L+N) PVC WIRE 2.5mm²/CEW. 20amp SP 5kg CB IN DISTRIBUTION BOARD FOR PROTECTION. 20amp SP 5kg CB IN DISTRIBUTION BOARD FOR PROTECTION.
	NEW 16amp STANDARD SOCKET 3 PIN 1x2 PIN SWITCH SOCKET OUTLETS BEARING THE SABS MARK MOUNTED ON WALL 300mm A.F.F.L. 16amp NORMAL BSO's TO BE WIRED WITH 2 x 4.0mm² (L+N) PVC WIRE 2.5mm²/CEW. 20amp SP 5kg CB IN DISTRIBUTION BOARD FOR PROTECTION. 2025mm PVC CONDUIT IS TO BE INSTALLED TO ALL POINTS ON 100mm x 100mm STEEL DRAW BOX ON WALL. 20amp SP 5kg CB IN DISTRIBUTION BOARD FOR PROTECTION.
	DATA POINT OUTLET
	TELEPHONE POINT OUTLET
	2 TIER COMPARTMENT PVC POWER SKIRTING
	3 POLE, RECESSED MOUNTED ISOLATOR RATRD IP65
	2 POLE, SURFACE MOUNTED ISOLATOR RATRD IP68
	1 POLE, RECESSED MOUNTED ISOLATOR RATRD IP65
	HEAVY DUTY GATE MOTOR
	DISTRIBUTION BOARD MOUNTED 2200mm A.F.F.L TO TO OP DISTRIBUTION BOARD
NOTES:	
1. POWER SKIRTING MOUNTED AND ALL SOCKETS ON POWER SKIRTING MOUNTED 100mm ABOVE COUNTER TOP.	
2. MOUNTED 100mm ABOVE COUNTER TOP.	

NOTES:

REFERENCE DRAWING		
NO.	DRAWING NUMBER	DESCRIPTION
1	3005	DB-A AND DB-B SINGLE LINE DIAGRAM
2	3006	DB-C AND DB-D SINGLE LINE DIAGRAM
3	3009	RETICULATION LAYOUT

REVISION		
NO.	DATE	REVISION

1	30/11/2022	ISSUED FOR TENDER	L MKHIZE
NO.	DATE	REVISION	REV. BY
LODEMANN HOLDINGS SIGNATURES			
DESIGNED	T. MATHA	SIGNATURE	DATE
DRAWN BY	L. MOKHE		
ENGINEER	L. MOKHE		
PROJECT MANAGER	A. MOKHE		

CLIENT DEPARTMENT SIGNATURES

FACILITY STAMP

FACILITY MANAGER

INFRASTRUCTURE MANAGER

GENERAL MANAGER

Checked by Professional Consultant
Name

Signature Date

SIGPRO
ENGINEERING AND PROJECT MANAGEMENT



NORTHERN REGION

Project:
KZN DOE INFRASTRUCTURE DEVELOPMENT AND MAINTENANCE PROGRAMME

Drawing Description:
**MATAMZANE DUBE SECONDARY SCHOOL
EXISTING CLASSROOM CL6, CL2 AND CL4
POWER LAYOUT PLAN**

Drawn: SIGPRO Date: 30/11/2022

Scale/s:
AS SHOWN (A1)

Consultant Drawing Number:
1013-023-3003

DBSA Drawing number
500124283

Stamped by Plans Approval Committee